

Supported Tag/ Protocol EPCglobal Gen2 (ISO 18000-6C) with DRM ISO 18000-6B (optional)

Lighting Power: 10W, Input Voltage: 120V Lifetime: 50000 Hrs, Lumens: 610LMS Color Temperature: 2700K, CRI: 90

Reader Protocol MonsoonRF Protocol, Firmware upgradable

UHF RFID Antenna 2 integrated Antennas: Directional (for Reading) + Omni (for wireless communication with 915MHz)

DATA SHEET

LANTERN-T

9

DBI
Antenna Gain

>15

DB
F/B Ratio

7

WATTS
DC Power Max (at 5 Volts DC)

< 1.3

VSWR

50

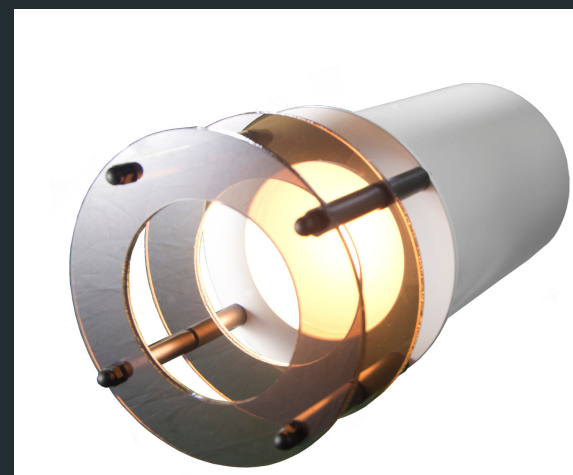
OHMS
Impedance

120

DEGREES
Beam Width

>15

**DB CIRCULAR
POLARIZATION**



DATA SHEET

LANTERN-T

RF Power 36 dBm Max (4 watts EIRP)

Dense Reader Management Dense reader mode, Auto event triggering and event management

Frequency FCC 902-928 MHz (Americas) ETSI 865.6-867.6 MHz (EU) KCC 917-920.8 MHz (Korea) TRAI 865-867 MHz (India) ACMA 920-926 MHz (Australia)
Channel Spacing 500 KHz

Electrical Power UL approved AC/DC convertor module
90VAC to 250VAC, 50 - 60 Hz input
5V 2.4A / 5V 1.0A dual DC output

Communications (Data/Control/Wireless) 1. Wi-Fi 2. 802.11S MESH Network 3. Custom 915 MHz

Physical Factors

Dimensions BR30 Equivalent Light Fixtures
Weight 2 Lbs (0.91Kg)

Environments

Operating Temperature -20C to +55C (- 4F to +131F)
Storage Temperature -40C to +85C

Performance

Max Read Rate Up to 200 tags/second/reader
Max Read Distance Up to 25 feet (7.6 meters)
Max EPC ID Length 128 Bits

Regulatory FCC 47 CFR 15.247; UL, ROHS Compliant

